

Connect, Innovate & Grow

Your guide to business success
in Cherwell, North Oxfordshire

Cherwell

DISTRICT COUNCIL
NORTH OXFORDSHIRE

Cherwell Business Guide



Located in Upper Heyford just outside Bicester, Cherwell Innovation Centre is the perfect location for your next meeting or conference.

With options for 2 to 30 people, avoid the traffic of Bicester and central Oxford, and make use of our spacious meeting rooms and on-site facilities.

Bookings include;

- **On-site parking**
- **Dedicated Wi-Fi**
- **Data projector**
- **Flip chart**
- **Pens & paper**



Managed by



For more info head to www.cherwell-ic.co.uk

Whether you want to swim, gym,
jump or stretch, dance, run, sweat or cycle,
we're here to help you with all your fitness needs.
Contact your local centre today.



Bicester Leisure Centre Queen's Avenue, Bicester, Oxfordshire. OX26 2NR. Tel: 01869 253914
Kidlington & Gosford Leisure Centre Oxford Road, Kidlington, Oxfordshire. OX5 2NU.
Spiceball Leisure Centre Cherwell Drive, Banbury, Oxfordshire. OX16 2BW Tel: 01295 257522



Don't forget
Bicester Bowl is also located
at Bicester Leisure Centre



Working in partnership with your Local Authority



Blessed George Napier Catholic School and Sixth Form A Youth Sport Trust Lead Partner School

Addison Road, Banbury, OX16 9DG

Telephone: 01295 264216 | Fax: 01295 277952 | www.blessedgeorgenapier.co.uk

All applications are welcome

An academy within The Pope Francis Catholic Multi Academy Company

Compassion

Respect

Truth

Service

Forgiveness



Opening the doors to a lifetime of opportunities and caring for the individual



2016 results

GCSE 5 A*-C 72% and 5A*-C including E/M 67%

A2 A*-B 54% with a 98% pass rate



“It is a friendly supportive community, in which students feel safe and well cared for. The school promotes students’ spiritual, moral, social and cultural development exceptionally well.”

Last Ofsted Inspection

“We are really just one big family who get on well together.”

BGN student quoted in last Ofsted Report



From the beginning of their BGN journey, we will endeavour to support, encourage and nurture each child to be the very best they can be: spiritually, academically and socially, equipping them to move confidently into the next stage of their life.

Connect, Innovate & Grow

Your guide to business success in Cherwell, North Oxfordshire

Published by:

Burrows Communications Limited, Cantium House, 2nd Floor, Railway Approach, Wallington SM6 0DZ
Tel: 020 8773 3000 • Fax: 020 8669 0301 • Email: postmaster@burrows.co.uk • www.burrows.co.uk

Please note:

This publication is wholly or partially funded by the advertisers herein and the publisher. It is provided at no charge to the council.

The guide's editorial content has been produced by Cherwell District Council and every care has been taken to ensure that all the information it contains is accurate and up-to-date at the time of printing. No responsibility or liability can be taken by the council for any errors or omissions, or for any inconvenience caused after the guide has gone to press.

July 2017/ All rights reserved.

Cherwell District Council reserves all editorial rights.

Cherwell District Council, Bodicote House, Bodicote, Banbury, Oxfordshire OX15 4AA.

Our Advertisers:

We gratefully acknowledge the support of all the firms whose advertisements appear in these pages. Without their help we would not be able to produce this guide and directory. As a reciprocal gesture we have pleasure in drawing the attention of our readers to their announcements, but wish to make it clear that Cherwell District Council can accept no responsibility for their products or services advertised.

'IT'S LOCAL' CHERWELL ONLINE BUSINESS DIRECTORY



Cherwell District Council is proud to be part of launching an exciting new service for businesses in Cherwell, connecting local businesses with local customers, free of charge and keeping trade inside the local economy.



- ✓ Market your business for **FREE!**
- ✓ **SEARCH** for local companies
- ✓ For businesses and people who **LIVE, WORK AND VISIT CHERWELL**
- ✓ **NO DOWNLOAD** or **INSTALL** to worry about

 /cherwelldistrictcouncil

 /Cherwellcouncil

www.cherwell.gov.uk

'It's Local' is an online business directory, built for today's mobile generation, that accompanies this Cherwell Business Guide.

At itslocalcherwell.co.uk you can find business services by keyword or company name. It is fully integrated with Google maps, directions and Streetview and includes direct links to businesses' websites and social media including Facebook, Twitter, LinkedIn, Google+ and Youtube.

The service can also be accessed from mobiles and tablets by sending a text message **4cherwell** to **88802**. The service is dynamic, sending device-appropriate pages to mobiles, tablets, laptops, desktops and Smart TVs.

Register your business at www.itslocalcherwell.co.uk and click on the '**Add Company**' link.

Notes:

1. 'its local Cherwell' is compatible with most web browsers, including Google Chrome, Firefox and Microsoft Internet Explorer (version 9 and above).
2. When accessing the service via mobile or tablet, there is no charge for the text message beyond your telecom provider's rate.

Contents

Foreword	7
Cherwell, North Oxfordshire	12
The Place to Do Business	13
The People to Work With	19
The Businesses to Trade With	22
Area Map	27
‘It’s Local’: Business Directory	29



We are a family-run business that's been based in the heart of Oxfordshire for over half a century. Since the '60s, our business has expanded considerably, and with two other sites in the UK as well as our Banbury home, we're now one of the country's largest independent manufacturers of corrugated packaging.

You've probably seen our products on your local supermarket's shelves – we manufacture a huge range of packaging for food and other products that helps give our customers' brands the wow factor, while being efficient to transport and store, and easy to recycle.

Innovative and dedicated local employer

As a local employer in Banbury with a diverse, ever-expanding team, we're always on the lookout for people to join us.

We pride ourselves on building passionate and knowledgeable teams to deliver quality and innovation to our customers. The Banbury site is also our UK headquarters and our experienced staff have the ability to manage every aspect of the business, from design and manufacture to administration, sales, customer care and distribution.

At Encase we believe in respect, innovation and continuous improvement. By nurturing talent and celebrating achievements we provide exciting opportunities for careers in this growing industry.

Encase Ltd

Beaumont Road, Banbury, Oxfordshire OX16 1RE
01295 752900 contact@encase.co.uk
[@encasegroup](#)

**INDEPENDENT
THINKING**

Foreword

By Councillor Lynn Pratt, Lead Member for Estates and the Economy

Welcome to Cherwell and this guide to the breadth and depth of businesses providing services and products from north Oxfordshire to local, national and international customers.

Cherwell District Council alone spends around £9 million each year with suppliers and amongst the 6,000 local enterprises there are sure to be useful contacts for you. The council also offers practical services to businesses to assist growth.

‘Connect, Innovate & Grow’ is not only the name of this guide but also indicative of the unique set of advantages afforded to businesses trading in Cherwell, north Oxfordshire. Cherwell is amongst the most productive districts in the UK.

The local connections available to business through networks and infrastructure combine with innovation arising from local universities and enterprises.

Major growth in the two key towns of Banbury and Bicester is underway, including significant new housing, employment premises and town centre schemes. Kidlington is home to the London Oxford Airport and Oxford University’s Begbroke Science Park with other rural parishes containing a wealth of enterprise.

You will hopefully find this guide useful as an introduction to our local businesses and the area which offers many rewards for people trading, investing, living, visiting and working in Cherwell, north Oxfordshire.



Councillor Lynn Pratt

Finally, please contact the council’s Economic Growth Team to discuss the range of different support services on offer. The team offers a variety of support including recruitment and property searches, planning assistance and town centre promotion.

Tel: 01295 221 866

Email: economy@cherwell-dc.gov.uk



020 7629 8171

KnightFrank.co.uk

All enquiries please contact

Ryan Dean

ryan.dean@knightfrank.com

A Development by London & Metropolitan

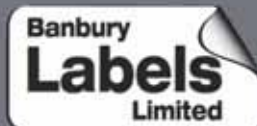


BICESTER OFFICE PARK

A NEW OFFICE DEVELOPMENT
FROM 30,000 SQ FT
UP TO 500,000 SQ FT

BANBURY LABELS LTD.

For all your Label Printing, Tickets and Tags Requirements



01295 277918

Unit 11, Penhill Industrial Park, Beaumont Road,
Banbury, Oxfordshire OX16 1RW

Email: sales@banburylabels.co.uk

www.banburylabels.co.uk



@banburylabels.co.uk

3035910



Bicester Cars

Great Service, Great Prices
Cash Back Loyalty Cards

01869 908908

www.bicestercars.co.uk

3036340



We are a family-run business that's been based in the heart of Oxfordshire for over half a century. Since the '60s, our business has expanded considerably, and with two other sites in the UK as well as our Banbury home, we're now one of the country's largest independent manufacturers of corrugated packaging.

You've probably seen our products on your local supermarket shelves – we manufacture a huge range of packaging for food and other products that helps give our customers' brands the wow factor, while being efficient to transport and store, and easy to recycle.

Giving Banbury a boost

We're a big employer in Banbury, and we like to give back to our community whenever we can.

For example, Banbury & Bicester College graphic design student Shireen Dew was awarded a silver star in the Institute of Materials, Minerals and Mining's Starpack Awards after receiving expert help from the Encase team in Banbury.

Shireen's chosen brief was to design packaging that provided a new use for corrugated board, so our expert designers gave Shireen advice on her project, and also laser cut her chosen design ready for her to screen print and finish.

We were very pleased to have helped Shireen pick up a silver star!



Encase Ltd

Beaumont Road, Banbury, Oxfordshire OX16 1RE
01295 752900 contact@encase.co.uk
[@encasegroup](https://www.instagram.com/encasegroup)

INDEPENDENT THINKING

Cherwell, North Oxfordshire



At Banbury Canal Day



Cherwell Business Awards

As you will see, the district of Cherwell in north Oxfordshire is “the place to do business” because it has an outstanding combination of “the people to work with” and “the businesses to trade with”.

What makes Cherwell special?

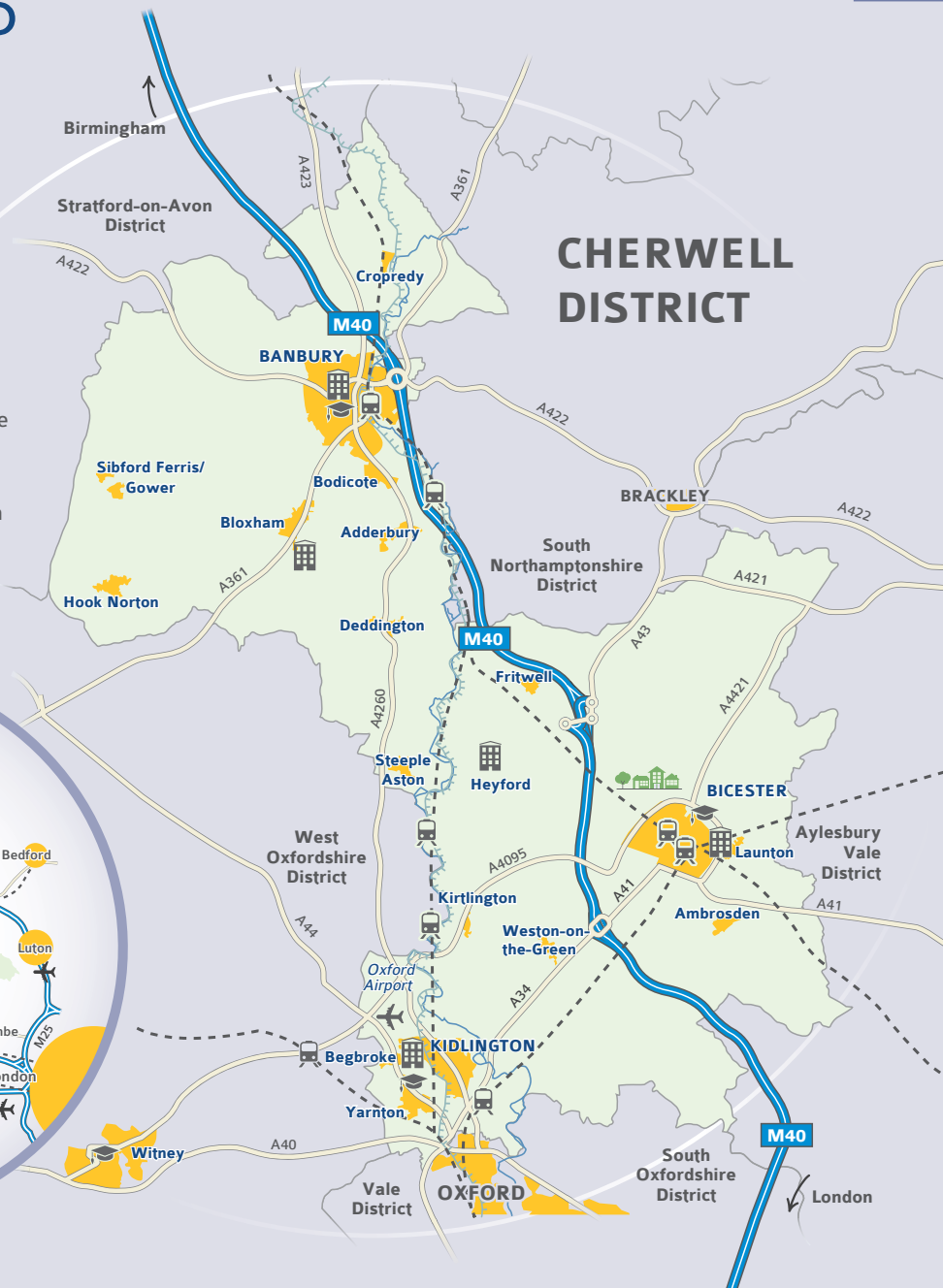
A unique combination of strengths and opportunities:

	Place	People	Business
Connect	Central location with efficient communications.	Economically active community with local and international links.	Strong networks of businesses and supportive partnerships.
Innovate	Hubs for innovation, education and enterprise.	Skills to suit business needs with access to centres of excellence.	Market leaders with world-class clusters of activity and a resilient range of activity.
Grow	Modern infrastructure, housing & employment with thriving town centres.	Significantly increasing population to enhance the local economy.	Resulting in profitable businesses providing outstanding products and services.

The Place to Do Business...

Key

- Motorway
- A Roads
- Canal
- River
- Railway
- Railway Station
- Built Area
- Cherwell District
- Innovation Centre
- Airport
- Further or Higher Education
- Silverstone
- Eco Bicester



The Cherwell District in north Oxfordshire is a predominantly rural area with three urban centres - Banbury, Bicester and Kidlington - where the majority of residents live and businesses are based.

Cherwell is **the place to do business** because it offers:

- a) Superb transport and virtual connections to support trade
- b) Infrastructure and expertise to enable innovation, and
- c) Land and premises to assist competitive growth

M40 at Banbury



Connect

Location

Cherwell district is superbly located within the 'golden triangle' of Oxford, Cambridge and London, mid-way between London and the UK's industrial heartland in the Midlands. It sits along the corridor between the major international ports of Southampton and Harwich, whilst also being adjacent to the dynamic Silverstone motorsport centre to the east and the beautiful Cotswolds to the west.

Road

The M40 passes north-south through the district and is readily accessible at junctions 9, 10 and 11. The A34 and A43 are major arteries within the district which, together with the local road network, ensure that the life blood of enterprise can develop and grow. Further investment is planned, such as the expressway connecting Oxfordshire and Cambridgeshire, paving the way to boost the local economy by enhancing east-west connections.



Chiltern Railways

Rail

The district has four excellent mainline railway stations at Banbury, Oxford Parkway at Kidlington and two at Bicester. London is less than one hour away and many other cities such as Birmingham and Manchester can be reached directly. Rail connections are improving further through the East-West Rail project, including the reopening of the Oxford to Cambridge line through Bicester. www.eastwestrail.org.uk

Air

The district even has its own airport: London Oxford Airport (OXF/EGTK) at Kidlington. It is the Thames Valley area's primary regional and business aviation airport - the only commercial airport between London Heathrow (LHR) and Birmingham (BHX).

www.oxfordairport.co.uk

Alternative major airports are located within easy reach at Birmingham and London.

London Oxford Airport



Telecommunications

The District is increasingly 'superfast' in its broadband connectivity which is ensuring that business and residential users across the District have access to high speed internet. www.betterbroadbandoxfordshire.org.uk 5G mobile networks are also being introduced.

Town Centres

The centres of Banbury, Bicester and Kidlington provide the hubs where businesses connect with consumers and with each other, providing a focal point for strong local communities. Banbury was one of the top three 'High Streets' in the Great British High Street Awards 2016.

Adding Value

The bottom line is that Cherwell's location adds value and reduces the costs of operating many businesses. With its high quality



Superfast Broadband

of life, north Oxfordshire offers rich rewards for those who live in, work in, and visit the district. To gain advantage, many businesses - including international market leaders - have chosen to locate in the district.

Innovate

Specialist innovation hubs have developed locally over the years, today providing access to unique skills, facilities and networks.

Innovation Centres

The Cherwell Innovation Centre at Heyford Park provides ease of access to laboratory space at its Diagnox centre, www.diagnox.co.uk

Innovation and small business centres in Bicester, Banbury, Begbroke and Bloxham provide a wide range of serviced and virtual office resources whilst nurturing the bonds between enterprises through which innovation arises.

Begbroke Science Park

The innovation hubs integrate further and higher education with enterprise. A world renowned example is provided through Begbroke Science Park, operated by the University of Oxford near Kidlington. Home to research groups from many academic departments, Begbroke has become a base for over 30 science-based R&D companies. In summer 2016 a new innovation facility

opened, providing an additional 2,000m² of laboratory and office space with further expansion expected. www.begbroke.ox.ac.uk

Oxford University's Begbroke Science Park pioneered a collaboration model for the University: Business interaction at the interface between science and technology. The resulting mix of interdisciplinary research and entrepreneurship has led to innovations which continue to change the way our world works. It's exciting to have such a place at the core of the Oxford science and engineering programme to develop and showcase impacts of increasing scale and scope.

Professor Donal Bradley,
Head of Division - Mathematical,
Physical & Life Sciences,
University of Oxford



At Begbroke Science Park

The Homes for the Innovators

The option to work and do business close to where you live is a reality in Cherwell district. To ensure a strong and balanced economy, Cherwell is at the forefront of housing innovation:

- At Elmsbrook (North West Bicester), the UK's leading eco-town is progressing and will be leading the way for further investment in green technologies and green knowledge across all sectors. www.nwbicester.co.uk

- Bicester is also on the national map as home to the largest self-build project in the UK with a 187 hectare site at Graven Hill providing around 1,900 homes and employment space for 2,000 new jobs.
www.gravenhill.co.uk

Grow

Available Land

A considerable amount of land for business growth and investment – almost 200 hectares – has been allocated through the adopted Cherwell Local Plan up to 2031. Notably, the allocations comprise a range of sites, under various ownerships and at locations across the district – especially in the towns. When combined with the 22,800 new homes to accommodate new entrepreneurs and additional employees, the range of products and services available from and within Cherwell will increase further.

New Housing at Adderbury



Pioneer Square, Bicester



Practical Support

To identify land or premises, or for assistance with recruitment, the Cherwell-M40 Investment Partnership (CHIP) is available to help. Administered by the Council, it provides a local connection to the services of the Local Enterprise Partnerships and the Department for Trade. See www.cherwell-m40.co.uk

Strong Local Centres

The district's prosperity is reflected in the vitality of Bicester, Banbury

and Kidlington's shopping centres, supplemented by the renowned Bicester Village and Banbury's recently completed Gateway Retail Park. Bicester Village alone draws around six million visitors a year, many of whom use local services. A £70 million regeneration project in Bicester town centre led by the Council has brought a Sainsbury's supermarket, a seven-screen cinema, new library, hotel, offices and shops.

Further significant investment is planned for Banbury town centre with several retail and leisure developments maximising the river and canal-side potential.

Heritage to Build Upon

Cherwell has for generations not only contributed greatly to the economic success of the nation but also to the defence of our whole way of life. In Banbury, the Alcan rolling mills which manufactured key aluminium components for aircraft for the



Logistics at the former Alcan site

Queen's Award for International Trade



Second World War are now home to logistics companies employing hundreds of people. At Heyford Park, the USAF provided a significant deterrent during the Cold War and this site now focuses upon high performance engineering and low carbon technologies. At the former RAF Bicester, the 1920s bomber station has become the UK's first dedicated centre for the restoration and display of vintage and classic cars, motorcycles and aeroplanes.
www.bicesterheritage.co.uk

At Bicester Heritage, © AutoHouse London



Bicester Heritage is the de facto home for the UK's £5.5bn historic car industry.

Daniel Geoghegan, Managing Director of Bicester Heritage.

With such a strong heritage, Cherwell is set to grow and to sustain its prosperity for generations to come.

The People to Work With...

The people living and working in Cherwell district are well connected, innovative and growing significantly in number. With an economically active population of 74,400 and only 520 Job Seekers Allowance claimants, work is central to day-to-day life in north Oxfordshire.

(ONS annual population survey 2016 and NOMIS Nov 2016),

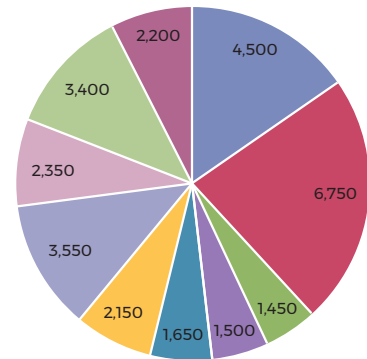
Cherwell has **the people to work with** because there is:

- a) Strong connection between employers and residents
- b) Innovation driven by skills within the local labour market
- c) Planned growth in the local working age population

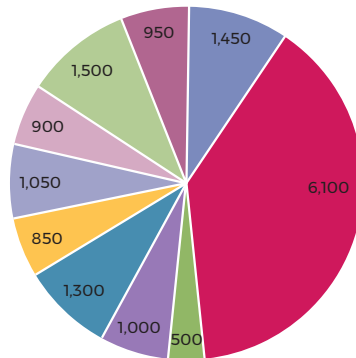
Employees by Sector in Banbury, Bicester, Kidlington



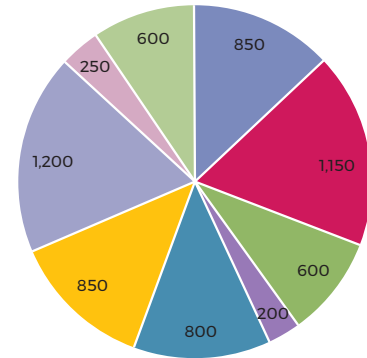
Banbury - 29,500



Bicester - 15,500



Kidlington - 7,400



Connect

Local employers are primarily based in town centres or on business parks near to where people live. This not only means that local residents can easily get to work, it also means that employers can more effectively attract and retain staff. Indeed, with over 3,000 people commuting away from Cherwell each day for work than entering it, businesses operating in the district have the potential to recruit even more high calibre staff from amongst local residents.

Job Fair at Bicester



For Cherwell's three urban centres, the charts on page 19 show the number of employees working in each industry (this does not include the self-employed). The data comes from the Business Register and Employment Survey 2015 (numbers have been rounded to the nearest 50).

In summary:

- In Banbury, the biggest employing industries are trade (23%) and manufacturing (15%).
- In Bicester, trade accounts for two-fifths (39%) of all employees, followed by manufacturing (9%) and IT/finance/real estate (8%).
- In Kidlington, individuals are employed primarily in administration (16%) and trade (16%), followed by manufacturing (11%), professional/technical (11%) and IT/finance/real estate (11%).

Employers and Employees: working together

To assist everybody, Cherwell Job Clubs are held weekly and are supplemented by day-to-day job-matching and regular skills and career development support. Impressive Job Fairs take place in Banbury and Bicester to provide local employers with the opportunity to meet and to recruit candidates and for people to explore their potential future career path, www.cherwell.gov.uk/jobclubs

Innovate

The district has a very active working age population with a range of skills and qualifications to meet the diverse needs of local employers and to provide the capacity for product and service innovation. 93.5% of the resident workforce (16-64 year olds) have qualifications compared to 91.4% across Great Britain (*ONS annual population survey 2015*).

The range of qualifications is considerable, reflecting the employment sectors outlined, with many employers actively investing in training and development, including Apprenticeships.

Access to Centres of Excellence

Supporting people involved with innovation is part of Cherwell's fabric:

- Higher education - four top-rated university business schools on the doorstep: Said and Brookes to the south at Oxford; Coventry and Warwick to the north.
- Further education – providing a wealth of workforce skills including the specialised Motorsports College at the Bicester campus of Banbury and Bicester College feeding the District's flagship motorsport sector
www.banbury-bicester.ac.uk

- Schools – including specialisms in Science, Technology, Engineering and Maths, and even in space technologies! Bicester recently opened an innovative Technology Studio School, a school for 300 students to combine studying for academic qualifications with business acumen through the active involvement of local employers involved with construction and other growing business sectors.
www.bicestertechstudio.org.uk

An Enterprise Culture

Centres for innovation are supplemented by outstanding initiatives such as the local activities of Young Enterprise to empower young people to harness their personal and business skills. There are 6,800 self-employed people in Cherwell district and that continues to grow through, for example, the expertise and support for

innovative start-ups through Oxfordshire Business Enterprises.
www.oxonbe.co.uk
(ONS annual population survey 2016)

Grow

Cherwell is one of the UK's fastest growing districts when considering the number of residents per capita. The resident population of 145,600 is projected to increase to around 155,650 by 2021.
(ONS Population estimates 2015)

What will this mean?

A virtuous cycle is expected to contain:

- Increasing numbers and breadth of employees and business start-ups
- Additional local consumers of products and services
- Enhanced investment in people, businesses and the towns/villages.

The Businesses to Trade With...



Chancery Gate Business Centre, Kidlington

Cherwell has such a diverse range of businesses active in local, national and international supply chains, some of which are featured here with many others featuring within the It's Local business directory section.

Cherwell has **the businesses to trade with** because there is:

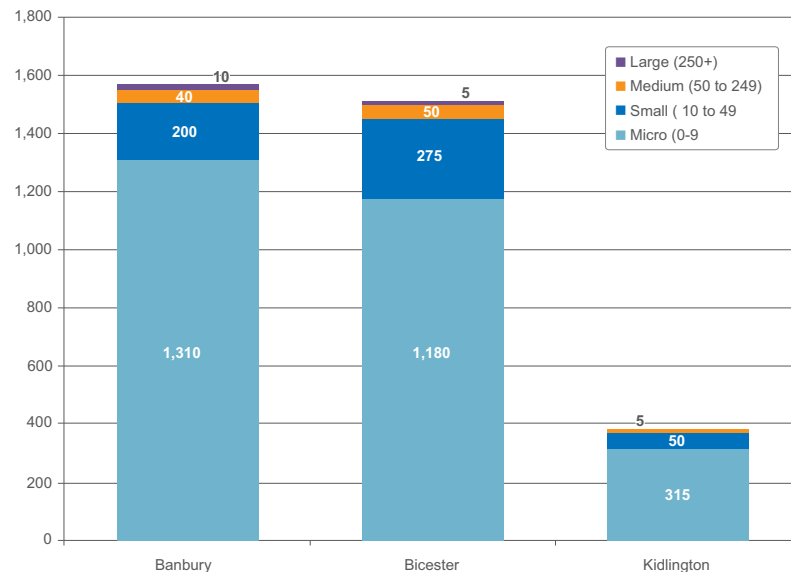
- Strong connection between diverse commercial activities
- Innovation arising from clusters of leading businesses
- Growth arising through being part of a resilient local economy

Connect

It may help to understand what makes the local economy tick:

All businesses: large, medium and small

Cherwell is home to 6,545 enterprises of which 88.2% (5,775) are 'micros' employing fewer than 10 people, 9.6% (630) employ 10 to 49 people, 1.8% (115) employ 50 to 249 people and 0.3% (20) employ more than 249 people. (*Inter Departmental Business Register - 2016*). Many smaller enterprises are scattered throughout the district but most enterprises, especially larger ones, are found within the three urban centres of Banbury, Bicester and Kidlington:



(UK Business Counts, Nomis 2016)

Local Networks

Within these urban centres, a wealth of groups and associations support established and new enterprises, which can be of tremendous benefit to trade and co-operation.

The networks include:

- *Banbury and District Chamber of Commerce*
www.banburychamber.com
- *Banbury Business Breakfast Club*
www.banburybusinessbreakfastclub.co.uk
- *Bicester and District Chamber of Commerce*
www.bicesterchamber.co.uk
- *Bicester Vision*
www.bicestervision.co.uk
- *Bicester Business Breakfast Club*
www.wednesdaybusinessclub.co.uk
- *Kidlington Voice*
www.kvoice.co.uk

Further details at:
www.cherwell.gov.uk/businessadvice

Partnership Support

Cherwell enterprises are supported by the district and county councils and also by two business-led organisations: Oxfordshire and South East Midlands Local Enterprises Partnerships.

- *Oxfordshire Local Enterprise Partnership*
www.oxfordshirelep.com providing an array of business support as explained at www.oxfordshirebusinesssupport.co.uk
- *South East Midlands Local Enterprise Partnership*
www.semlep.com adding further valuable services www.velocitybusinesssupport.com
- *Cherwell-M40 Investment Partnership*
www.cherwell-m40.co.uk to enable councils, businesses and investors to work together for the benefit of the district's economy.

Innovate

Cherwell is a powerhouse of many business sectors including those at the forefront of science, technology and innovation.

The high employment rate in Cherwell is courtesy of the market-leading enterprises that have expanded locally. Major innovation-led employers include UTC Aerospace, Jacobs Douwe Egbert and Integration Technology. Smaller employers are no less innovative and often include spin-out companies from the renowned local universities and nurtured through specialist innovation centres.



Integration Technology at Heyford Park

Clusters of Enterprise

Established clusters in Cherwell include motorsport, bio-medical, nanotechnology, mechanical engineering, printing and food-processing. The district is not only an integral part of the M40 corridor but is also on the high-tech Oxford to Cambridge Arc (O2C), creating further opportunities for innovation through knowledge-driven business.

North Oxfordshire and South Northamptonshire provide a home to the unique cluster of motor racing and advanced engineering enterprises which surround Silverstone Circuit and extend across Cherwell.

Bicester and Banbury are both about 15 miles from Silverstone and have hosted Formula One teams for many years, leading to an extensive supply chain network that has often used its know-how to develop service and products for marine, aerospace and other cutting-edge technology activity.

Banbury Racing in Bermuda!

Banbury-based Prodrive was the technical supplier for the British team in the challenge for the America's Cup in Bermuda. Long known for its motorsport racing and rallying, Prodrive runs the Aston Martin Racing teams in World Endurance and British GT Championships.

However the company's advanced technology expertise also extends to aerospace and marine projects, including the control systems for the hydrofoils and sail on the Land Rover BAR America's Cup boat, skippered by four times Olympic sailing champion Sir Ben Ainslie.



Grow

The well-connected and innovative businesses in Cherwell prosper through expanding their local markets or providing their products or services to national and international customers. With a growing population, the market place within Cherwell is expanding, as are the number and variety of businesses.

With around 6,500 enterprises in Cherwell, the number is growing – in 2014, for example, 8% (520) of these ‘died’ - less than the national death rate for businesses (10%) – but 730 were ‘born’, leading to an increase in the number of active enterprises in the following year.

(ONS Business Demography 2016).

From Local to Global Success

Cherwell is home to many businesses with international markets and world-class expertise, with many sharing their knowledge and co-operating through the local offices and international specialists of the Department for Trade.

Additional services are provided through local accountants and lawyers, with further support available through the Oxfordshire International Business Club www.oibc.biz

Norbar Torque Tools: a family-led global success

Banbury has been our home for over 70 years, during which time we have expanded from ‘North Bar’ in the town centre, to several other sites around the town as we have grown in line with our long-term investment plan.

In summer 2016 we moved to our new premises on Wildmere Road with the space and facilities to ensure the long term future in Banbury of our business and its loyal, highly skilled workforce. We are committed to manufacturing in the UK and to attracting and retaining skilled employees (including our 10 apprentices) and to continually developing their skills to meet the future needs of the business. We export over 70% of everything we make to markets all around the

world. Our strategy of product leadership ensures that our products and services continue to be globally renowned.

As we grow and develop our social and environmental impact remains as important as ever. Our involvement with community groups and charities in the Banbury area is extensive and we have worked with local partners to install a solar PV scheme on our new factory which is capable of generating 200,000kWh per annum (the equivalent of the electricity needed to power 50 homes). We have also recently put in place an energy management system which is ISO50001 accredited.

Catherine Rohll, Commercial Director, Norbar Torque Tools Ltd



CHIP Partnership

Welcoming Investment

The Cherwell-M40 Investment Partnership, established since the 1990s to integrate local business growth support services, has provided practical help to key investments locally. Help is available with all the information, advice and guidance you may need. www.cherwell-m40.co.uk

Experience Cherwell

More people are experiencing Cherwell: the total value of day and overnight trips grew by 3.8% between 2014 and 2015.



At Lower Heyford

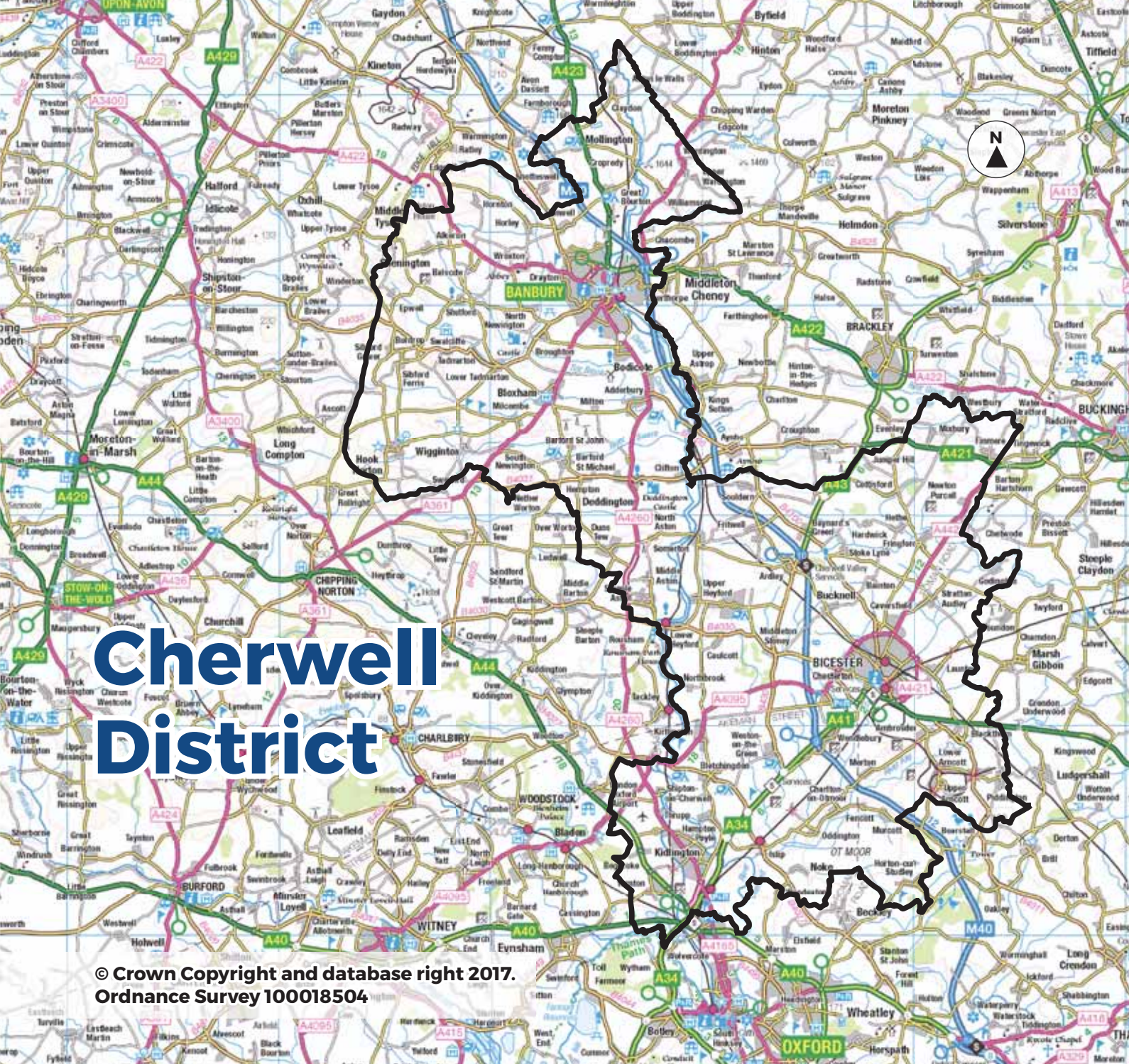
Approximately £379 million was spent by visitors making around 6.8 million trips to Cherwell in 2015. (*Cambridge Economic Impact Model and the Destination Research 2015*).

In short:

With the strength of Cherwell's location and the people living and working locally, businesses are provided with every opportunity to provide products and services successfully for you and many other customers from both near and far.

Karcher's UK Headquarters

Karcher - renowned for the manufacture of cleaning and pressure washing machines - is one of Banbury's oldest international companies, having first moved to Banbury in 1978 with just eight staff. In 2016 the firm of 300 staff moved to a purpose-built headquarters in Banbury adjacent to junction 11 of the M40. This allowed the expansion of a market-leading training facility, the Karcher Academy, as well as the opening of the Karcher Centre, a one-stop-shop with sales, service and advice for both domestic and commercial customers on the entire Karcher range.



Cherwell District

© Crown Copyright and database right 2017.
Ordnance Survey 100018504

LONDON OXFORD AIRPORT



'It's Local' Business Directory

At the heart of this Guide is an advanced online business directory called '**It's Local**'.

Free-of-charge to use, 'It's Local' connects businesses-to-businesses and businesses-to-consumers with the aim of facilitating local trade whilst showcasing the many and varied businesses in Cherwell, north Oxfordshire.

You can access 'It's Local' directly via your mobile, tablet, laptop, desktop or smart TV.

Fully integrated with Google maps, directions and Streetview, It's Local provides direct links to a company's website and social media pages such as Facebook, Twitter, Google and YouTube.

Free-to-enter for all enterprises based in Cherwell, you would be welcome to add your contact details at:

www.itslocalcherwell.co.uk

Cherwell District Council - supporting enterprise

Cherwell District Council is not only a regulatory authority but also provides services and support directly to businesses.

Information, advice and guidance is available on:

- available employment land and vacant premises
- starting and growing your business

- business networking and local purchasing opportunities
- job clubs, job fairs, job matching and apprenticeships
- tourism promotion and development
- business rates
- business waste
- food safety and hygiene
- licensing
- planning and building control

www.cherwell.gov.uk

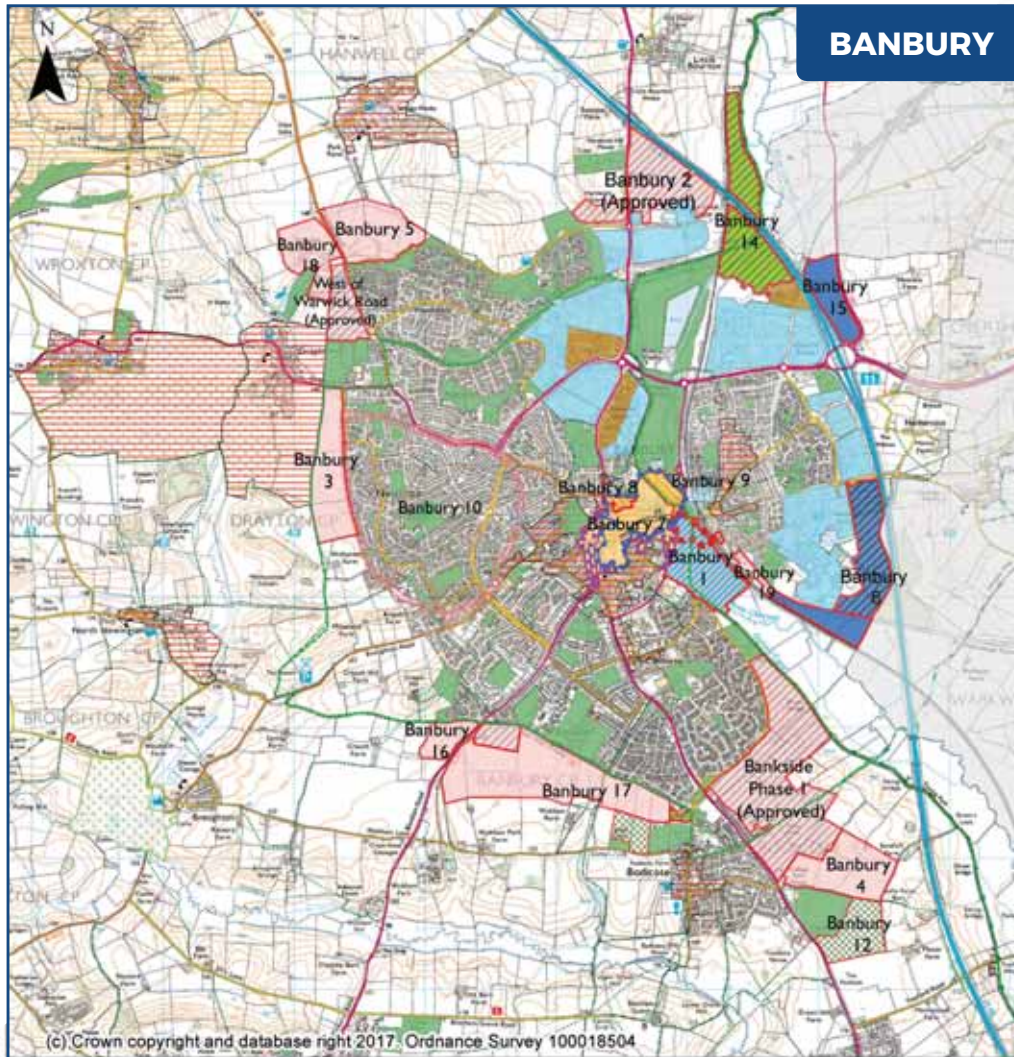


Banbury Cakes



At London Oxford Airport

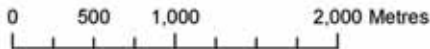
Cherwell's Adopted Local Plan -



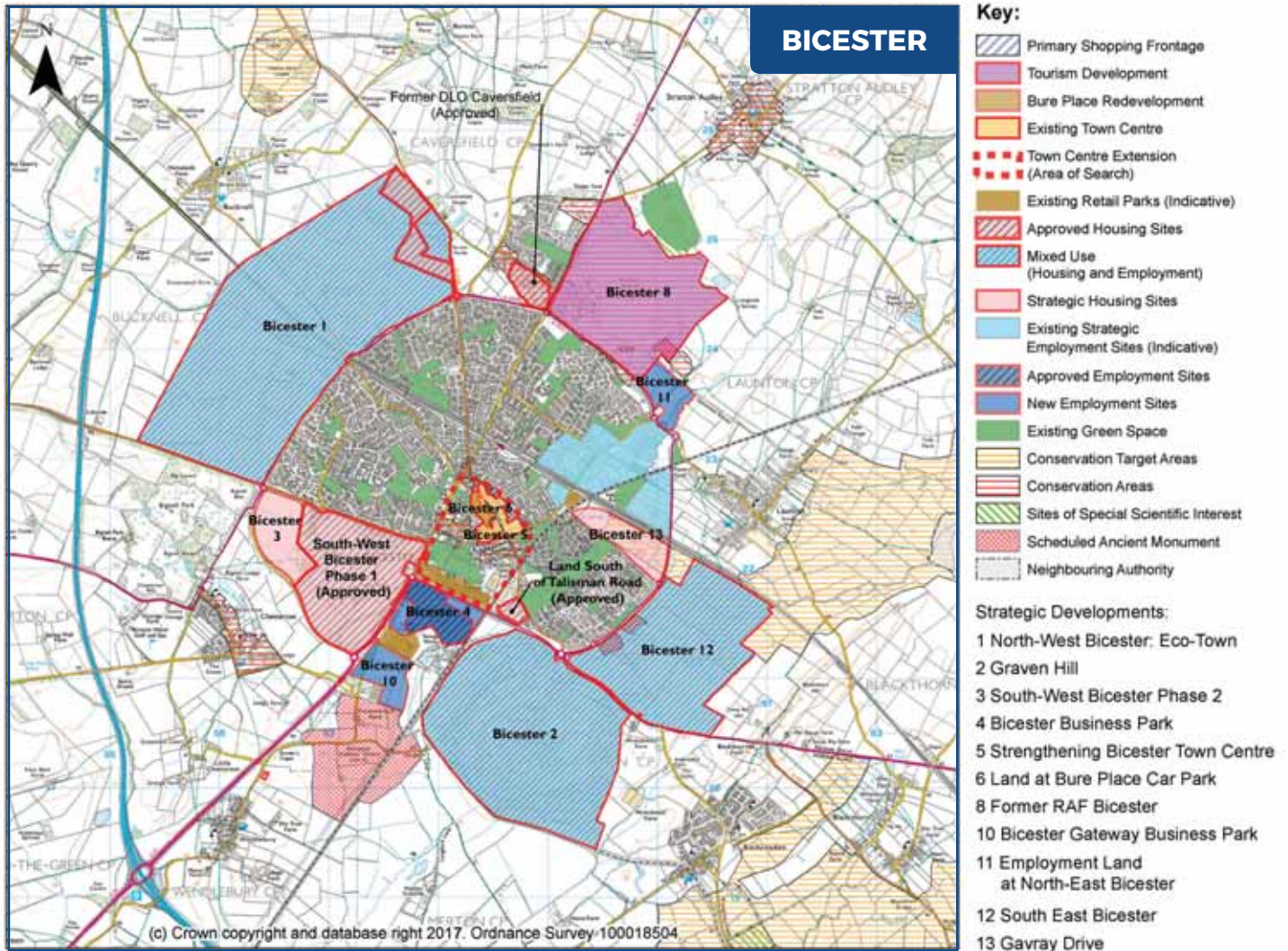
- Key**
- Town Centre Shopping Area (Extended)
 - Town Centre Commercial Area
 - Primary Shopping Frontage
 - Banbury Circular Walk/Oxford Canal Trail
 - Existing Strategic Employment Sites (Indicative)
 - New Employment Sites
 - Approved Employment Sites
 - Town Centre Extension (Area of Search)
 - Mixed Use (Housing and Employment)
 - Bolton Road Development Area
 - Spiceball Development Area
 - Expanded Town Centre
 - Existing Retail Parks
 - Strategic Housing Sites
 - Approved Housing Sites
 - New Green Space and Parks
 - Outdoor Sports Provision
 - Bretch Hill Regeneration Area (indicative boundary)
 - Existing Green Space
 - Conservation Target Areas
 - Conservation Areas
 - Parks and Gardens
 - Sites of Special Scientific Interest
 - Neighbouring Authority

Strategic Developments:

- 1 Banbury Canalside
- 2 Hardwick Farm, Southern Road East and West (Approved)
- 3 West of Bretch Hill
- 4 Land at Bankside Phase 2
- 5 North of Hanwell Fields
- 6 Employment land west of M40
- 7 Strengthening Banbury Town Centre
- 8 Bolton Road Development Area
- 9 Spiceball Development Area
- 10 Bretch Hill regeneration area
- 12 Proposed Banbury United FC relocation
- 14 Cherwell Country Park
- 15 Employment Land North East of Junction 11
- 16 South of Salt Way - West
- 17 South of Salt Way - East
- 18 Land at Drayton Lodge Farm
- 19 Higham Way



Setting the framework for growth in Banbury and Bicester



0 500 1,000 2,000 Metres

Imagine flexible, cost-conscious, hi-tech office space in a beautiful setting...

No need to imagine. At Bloxham Mill this is reality.

Established for over 15 years and set four-miles south of Banbury, in rural, landscaped grounds, Bloxham Mill is a thriving business community and “home” to over 100 resident and virtual businesses – including regional offices of some renowned national organisations. It also has a strong and active involvement in supporting local causes. For example, in the last year alone, Bloxham Mill has sponsored Space Academy Awards, Warriner School, Bloxham Football Club, Let’s Play new building initiatives and business mentoring for sixth form students.

Excitingly, to complement the main heart of the business centre, Bloxham Mill has invested £1.9M in building 8,000 square feet of hi-tech, luxurious, semi-serviced commercial offices – The Copse @ Bloxham Mill – now ready to welcome new businesses.



Bloxham Mill Serviced Offices At-a-glance

Bloxham Mill offers as an ideal alternative to a conventional office space for Small and Medium Businesses (SMBs).

It has...

- Modern, efficient, and cost-effective Serviced Office and support solutions
- Purpose-built semi-serviced office options
- An ideal setting, situated 4 miles south of Banbury and the mainline train station; within 6 miles of the M40 and less than 30 minutes' drive from Oxford
- Ample free car parking
- An on-site café with free Wi-Fi
- 24-hour secure access

Client benefits include...

- Flexible terms
- Full Reception service
- Dedicated, on-site IT and telephony support
- Meeting room hire at preferential rates
- Mail handling – incoming and outgoing
- Inclusive cleaning and maintenance – with no unforeseen costs
- On-site hairdresser
- Free use of Fitness Studio

Existing office space

So what makes Bloxham Mill's existing office space such an attractive and practical fit for Small to Medium Businesses (SMBs)? Managing Director Ray Avery explains.

“We’re all about making space work for a business whether they’re just starting up or are more established. Our flexibility means that our clients can upgrade to more space as their business expands, for instance.

“Our welcoming and efficient Reception, plush and well-equipped meeting rooms, café and business buzz, make us a great place to do business in. We’re also the only business centre in the UK to have its own, on-site data centre.”

Keeping up appearances

Bloxham Mill has recently undergone internal refurbishment with enhanced meeting room space including upgraded technology and the restyling of Reception and other communal areas. Refurbishment will be on an ongoing basis in order to maintain the high standards it promotes. Award-winning Reg’s Café now runs the centre’s on-site catering facility.

Outside, the car parks and roadway have recently been resurfaced and landscaping is continual. The decking area has been extended, providing even more recreational space for its clients – and their clients – to mix and mingle.



Networking

Another bonus of being part of Bloxham Mill's business community is the fact that it organises and hosts regular networking events. These include Breakfast Networking at Bloxham Mill (BN@BM), and b2b evenings, in association with Federation of Small Businesses; where guest speakers come to Bloxham Mill and present on a key business topic giving attendees the chance to learn, share and network. Recent events have included speakers on LinkedIn, Setting Business Goals and Branding.

So, as Bloxham Mill continues to grow both in terms of its business office space and client community, it's the perfect setting for SMBs to grow their businesses too.



What they say about Bloxham Mill...

"Our very first viewing of serviced offices was at Bloxham Mill, which set a really high benchmark. The ambience was warm and welcoming and the ethos really seemed to be that nothing was too much trouble – the passion from Managing Director Ray Avery, was particularly evident. I just didn't get this from the other sites we visited because they seemed cold and clinical!"

Hayley Hoy, Business Coordinator, Serco Wincanton

"From the beginning of negotiations right up until we moved in, Managing Director Ray Avery was superb. Nothing was too much trouble and he skillfully fulfilled our requirements around space for both our office function and stock. Any office move is generally stressful but our move to Bloxham Mill

was very smooth. Not having to orchestrate the migration of suppliers for electricity, telephony etc. to our new offices made such a difference; it was all set up ready for us to start business on the day we moved in. We're really benefiting from all the extras that Bloxham Mill offers such as the efficient and friendly Reception service, and meeting rooms which we hire twice monthly for our training sessions. Our business is rapidly growing and we're already in discussions with Ray to increase our office space to accommodate that growth. Moving to Bloxham Mill was so right: the right time, the right location and the right space."

Kate Gibbins, Office Manager, Shared Beauty Secrets

"The offices at Bloxham Mill allow us to present a professional office space to our employees and customers with the added bonus of free parking and onsite catering which has been well received.

The team have been really flexible and supportive of our requirements."

Ian Rolls, Head of Central Services, Aldermore

"From our first visit, we knew that Bloxham Mill was the 'home' for us. Managing Director Ray Avery was, and continues to be, so welcoming, helpful and accommodating. It's not just the wonderful setting that makes being at Bloxham Mill so enjoyable; it's also the cost-effective and worry-free aspects of having a serviced office and being part of the buzzing business community, which we really relish."

David Stewart, David J Stewart Associates, Architects

"At Bloxham Mill, my start-up business has moved to another level. It's ideal for all my clients to come and see me and I have the reassurance that more office space is an option, as I grow."

Šárka Naivertová, Managing Director, Distinct Estate Agents



**If you'd like to visit Bloxham Mill and find out more, please contact:
Ray Avery Telephone 01295 722800
Email ray.avery@bloxhammill.com | www.bloxhammill.com**

FURTHER DESIGN AND BUILD OPPORTUNITIES AVAILABLE

FROM 100,000 - 525,000 SQ FT

DETAILED PLANNING CONSENT OBTAINED FOR BUILDINGS OF 333,333 SQ FT AND 198,750 SQ FT ENABLING FAST TRACK DELIVERY.

AVAILABLE SUMMER 2017

BUILDING 8


BUILDING 7

INDICATIVE BUILDING 5

INDICATIVE BUILDING 6

M40 

CONSENTED AND AVAILABLE
FOR DEVELOPMENT
**OF UP TO 525,000 SQ FT
(48,774 SQ M)**

 **TO OXFORD
& CENTRAL LONDON**



A422

11

ERMONT WAY


Bidvest Logistics

CHALKER WAY


Hello Fresh


FIRST LINE
THE ALL MAKES SPECIALIST


UTC Aerospace Systems

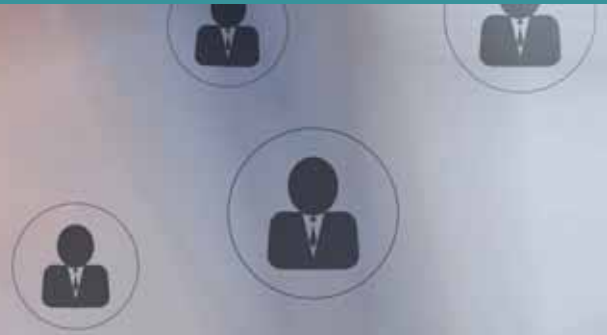
TO REDDITCH & BIRMINGHAM 


drive

236,580 SQ FT (21,979 SQ M)
LET TO HELLO FRESH

COMPLETED APRIL 2015
114,000 SQ FT (10,591 SQ M)

CHAMPION RECRUITMENT



OXFORDSHIRE BASED SPECIALISTS IN RECRUITMENT. CONNECTING THE RIGHT PEOPLE SINCE 1981.

Champion Recruitment handles the recruitment for temporary, permanent and contract positions from a range of sectors, for clients throughout Oxfordshire. Supplying the public, private and charitable sectors, we have 9 specialist divisions covering:

- Office/Administration
- Accountancy/Finance
- HR • Catering • Industrial
- Drivers • Technical/Scientific
- Sales & Marketing • I.T.



Follow us on  @ChampionRecruit | @AccountsSelect



WWW.CHAMPION.CO.UK | WWW.ACCOUNTANCYSELECTION.CO.UK



Whether you are a company looking to recruit a new staff member, or a jobseeker looking for your next position within Oxfordshire, we would welcome the opportunity to assist you. For further details on the services we provide, contact us now at one of our four branches:

Banbury	01295 224224	banbury@champion.co.uk
Oxford	01865 264050	oxford@champion.co.uk
Abingdon	01235 844001	abingdon@champion.co.uk
Witney	01993 892500	witney@champion.co.uk



Find us on  @ChampionRecruitment | @AccountsSelect



THE ULTIMATE LUXURY SHOPPING EXPERIENCE

Discover an indulgent mix of more than 130 luxury boutiques including Alexander McQueen, Mulberry and Saint Laurent Paris with savings of up to 60%* all year round. Furthermore, make it a day to remember and indulge in one of our luxury services, or dine in style until 10 pm at one of the Village restaurants.

Find out more at BicesterVillage.com

BICESTER  **VILLAGE**
#BICESTERVILLAGE



BICESTER VILLAGE CAREER OPPORTUNITIES

Bicester Village is looking for candidates who can bring passion to a luxury, fast-moving retail environment. A number of boutiques and restaurants are seeking enthusiastic candidates who would like a new challenge, or who may be looking to return to work.

For more information, visit [BicesterVillage.com/careers](https://www.BicesterVillage.com/careers) or contact us at Jobs@BicesterVillage.com

BICESTER  VILLAGE

#BICESTERVILLAGE

Commercial waste and recycling



A dedicated collection service for local businesses, helping you save money and recycle more

Phone: (01295) 221916
Email: tradewastecollection@cherwell-dc.gov.uk
Web: www.cherwell.gov.uk/tradewaste

Cherwell
DISTRICT COUNCIL
NORTH OXFORDSHIRE

Specialist legal services for you and your business



52-54 The Green
South Bar Street
Banbury
Oxfordshire
OX16 9AB
T 01295 204000

spratt endicott
SOLICITORS

E enquiries@se-law.co.uk
www.se-law.co.uk

BANBURY

BRACKLEY

BICESTER

BUCKINGHAM



ESSENTIAL COVER IF YOU WORK IN PUBLIC SERVICES

**Three simple ways to join UNISON today
and get essential cover wherever you work**



Join online at
joinunison.org



Call us on
0800 171 2193



Ask your UNISON rep
for an application form



Member Benefits

Our members receive our essential cover support, have access to exclusive benefits and can take advantage of many training opportunities.

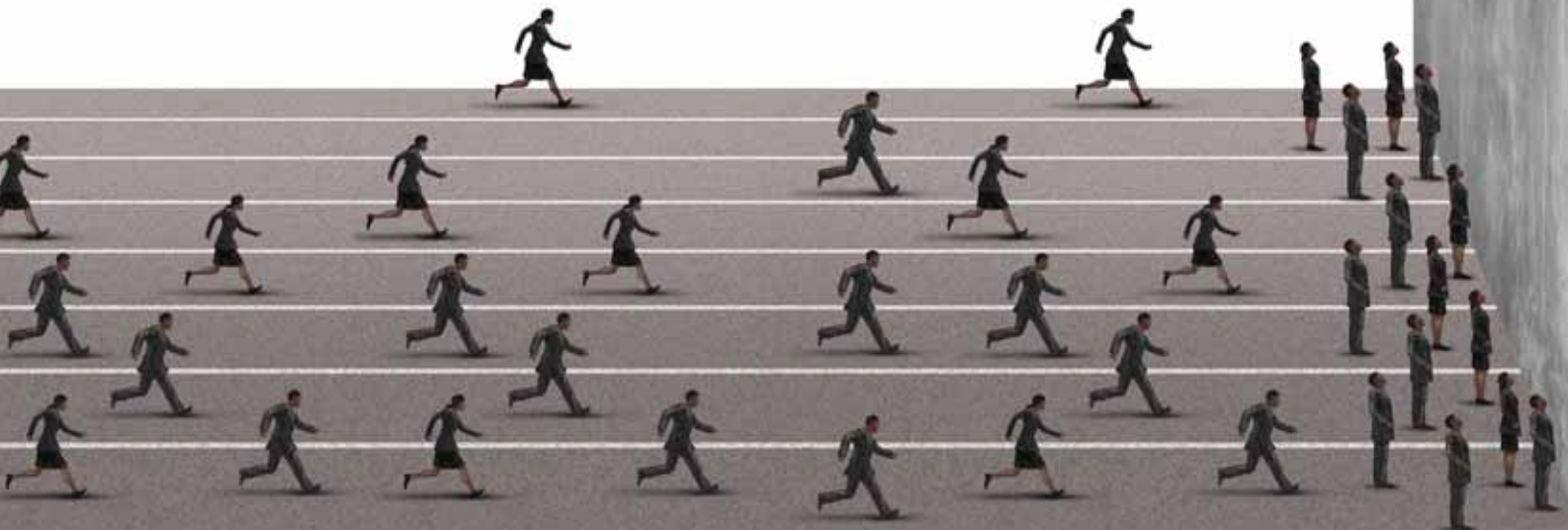
- **Free training and development**
- **Death and accident benefits**
- **Legal services**
- **Welfare benefits**
- **Financial grants for learning**

kallkwik[®]

business design + print

FAST · LOCAL · PERSONAL
SINCE 1989

At Kall Kwik, helping our clients succeed is the best part of the job, whether it's refreshing your brand and website, achieving that stunning finish for your time critical tender documents and proposals or producing striking exhibition and events material. With our team behind you, you've already got the competitive advantage.



Whatever the contest...

sales@kkbanbury.co.uk • www.kallkwik.co.uk/banbury

...we'll make sure you stay in front



Booklets
Brochures
Business cards
Business stationery
Certificates
Christmas cards
Compliments slips
Dividers
Envelope printing
Flyers
Folders
Forms
Funeral orders of service
ID badges
Invitations
Invoices
Labels
Lanyards
Leaflets
Letterheads
Menus
Map Copying and Printing
NCR
Newsletters

Note pads
Pillow packs
Plastic cards
Postcards
Price lists
Proposals
Tent cards
Training manuals
VIP passes
Wedding Invitations
Wedding Orders of Service

DESIGN

Copywriting
Corporate Identity
Creative Ideas
Image sourcing
Logo design
Marketing and advertising
Multimedia
Website design

LARGE FORMAT

A frames

Architectural Plans
Canvas prints
Display stands
Exhibition graphics
Outdoor graphics
Point of sale
Pop up stands
Posters
PVC Banners
Roller banners
Shell scheme graphics
Signage
Vehicle graphics
Vinyl Stickers
Window graphics

DIRECT MAIL

Campaign management
E-shots
Fulfilment
Inventive mailers
Mailing list
Teaser campaigns
Variable data printing

2a West Bar • Banbury • OX16 9RR • 01295 271838



Driver Training Limited

"Getting it right first time"

JLD Driver Training Limited is considered to be the region's premier logistics training centre. Using our DVSA accredited instructors and modern learning facilities you couldn't be in better hands.

Driver CPC – Initial and Periodic Training (PCV and LGV)

LGV training – Rigid (Category C) and Artic (Category C+E)

Car and Trailer Training (Category B+E)

Forklift Training

ADR Training

Apprenticeships (including LGV licence if eligible)

First Aid /Manual Handling/Health & Safety Courses



**SPECIALIST
PROVIDER OF
LOGISTICS
TRAINING**



Using our vast knowledge and many years of experience within the logistics industry, we have driven our business to the forefront of the training industry, becoming the region's premier training company.

At JLD we are passionate about training and have built our business and reputation by paying attention to the details that really matter.

Trading from two centres in Banbury and Abingdon, our customer base stretches from private individuals and owner-managed businesses to large corporations and public bodies.

At JLD we go the extra mile to get you through your test first time, that's why we now have our own DSA accredited test area. This means the examiner will come to you, so you can relax in the knowledge you will be in familiar surroundings on test day and reverse on the area you have been practicing on!!

Benefits of JLD

- ✓ Excellent pass rate
- ✓ Central location
- ✓ Over 40 years' training experience
- ✓ Training offered from two locations
- ✓ Excellent classroom facilities
- ✓ Local College Partnerships
- ✓ Accredited centre for a number of awarding bodies



JLD Driver Training - *"getting it right first time"*

Contact our friendly team today

Call: **0845 208 80 81** Email us: **info@jldlgv.co.uk** **www.jldlgv.co.uk**

driver **cpc**
GET QUALIFIED STAY QUALIFIED
APPROVED CENTRE ACCESS

White Commercial Chartered Surveyors

'The most effective Commercial Property consultants in the region'

White Commercial Surveyors provides Commercial Property Advice across all sectors of the Commercial Property Market. The Company's knowledge and expertise is extensive, whilst their sense of humour and commercial acumen are well known to clients and businesses throughout the Commercial Property Sector.

■ AGENCY AND DEVELOPMENT

We have been involved in over 1.8m sq ft of commercial property transactions in the past 18 months whilst dealing with over 750 acres of existing and future industrial, office, business park and retail developments. We provide full consultancy development advice from financial viability through to planning, development, leasing and disposal.

■ PROPERTY MANAGEMENT COMMERCIAL AND RESIDENTIAL

The proactive and hands-on management of retail industrial and office and residential buildings/developments and estates for owners of commercial and residential property.

■ NEGOTIATING RENT REVIEWS & LEASE RENEWALS

Negotiation of new and existing rental and lease terms for landlords and tenants and advice on lease covenants.

■ FORMAL VALUATIONS

Formal commercial property valuations for Security / Mortgages / Inheritance Tax / Accounts / Balance Sheet purposes.

■ ACQUISITIONS

Acquiring office / industrial/ retail buildings for occupiers,

advising inter alia on the best economic and legal terms, and assisting with their occupancy requirements focused on providing an efficient and effective working environment.

■ STRATEGIC & MASTER PLANNING

Comprehensive advice on Planning and the Development of large scale sites for commercial and mixed-use schemes.

■ INVESTMENT DISPOSAL / ACQUISITIONS

The purchase or disposal of income producing commercial property including office, retail or industrial buildings, estates and portfolios.

■ MOTORSPORT / AUTOMOTIVE TECHNOLOGY

White Commercial currently provide advice and consultancy services to a number of the leading businesses in high performance automotive technology and motorsport businesses including various Formula 1 racing teams. Being situated in the 'Horse Power Highway' and close to Silverstone, White Commercial has built an enviable reputation for dealing with companies such as Mercedes Petronas (formerly Brawn, Honda and British American Racing), Red Bull, Prodrive (World Rally Championship), Triple Eight Racing (British Touring Car Champions) and Arden Motorsport (Formula 3000).



Chris White, Managing Director
BSc (Est Man) MRICS (Arb)
chris@whitecommercial.co.uk
07990 527551

For further information please contact:
White Commercial Surveyors

Charter Court
49 Castle Street
Banbury
OX16 5NU



Andrew Fairbairn, Director
FRICS LLM
andrew@whitecommercial.co.uk
07711 142887



... The Professional Alternative

Stimpsons Eves is an independent professional practice offering a wide variety of services including:

- Commercial Agency and Land (Disposal and Acquisition)
- Residential and Commercial Condition Surveys
- Rent Reviews
- Red Book Valuations
- Rating Appeals
- Probate Valuations
- Landlord and Tenant Advice
- Capital Gains Valuations
- Lease Renewals
- Schedules of Dilapidations
- EPC / Asbestos Reports
- Property Management
- Building Works and Specification Advice
- Property Portfolio Management and Advice

Martin Patchett BSc (Hons)

01869 360136

martin.patchett@stimpsonseves.co.uk

Neil Moran MRICS

01908 611408

neil.moran@stimpsonseves.co.uk

Giles Ferris BSc (Hons) MRICS

01234 341311

giles.ferris@stimpsonseves.co.uk

www.stimpsonseves.co.uk



Tailored to your needs

We ensure that we thoroughly understand your challenges and the needs of your business. We tailor intelligent, effective solutions to help you grow.

Contact Whitley Stimpson for a **FREE** consultation.

Banbury Office: +44 (0)1295 270200

High Wycombe Office: +44 (0)1494 448122

Bicester Office: + 44 (0)1869 252151

Witney Office: + 44 (0)1993 700010

Email: info@whitleystimpson.co.uk

PARTNERS IN
YOUR PROGRESS


Whitley Stimpson
CHARTERED ACCOUNTANTS AND BUSINESS ADVISORS

whitleystimpson.co.uk

Whitley Stimpson is one of the region's leading independent accountancy firms, with offices in Banbury, Bicester, High Wycombe and Witney, which gives us a reach in the M40 corridor from the Cotswolds to the powerhouse of business in London.

We are in the top 100 practices in the country, and have been finalists at the British Accountancy Awards for the last 2 years. This is down to our expertise and experience in accountancy, tax and business advice and our strength in a number of sector specialities.

We have over 85 years of experience of working with and advising local and national businesses. With specialities such as education, agriculture and service charge accounting, we also provide leading edge, sector specific advice.

We listen to you. We support you in the long term. We deliver our services on time. We look for innovative solutions. We communicate politely and in plain English. We are flexible.

And above all we put you first and work in partnership with you as your lead professional advisor, not only to help you to be successful, but to take away the day to day burden of all things financial and regulatory while letting you focus on what you are passionate about.

Whitley Stimpson continues to grow year on year, both organically and through strategic mergers and acquisitions. We first extended our services into Buckinghamshire in 2010 following a merger with Hale Partnership based in High Wycombe. In 2014 we merged with Baxter Payne & Haigh based in Bicester and on 1st April 2016 we merged with the Witney based Morgan Harris Group, which significantly enhances business growth, extends the firm's geographical reach and bolsters a strong team of specialists.

For further information please visit our website www.whitleystimpson.co.uk, call Banbury on 01295 270200, High Wycombe on 01494 448122, Bicester on 01869 252151 or Witney on 01993 700010 or email info@whitleystimpson.co.uk.

Our directors - back row: Penny Parmar; 3rd row (L-R): Val Buzzard, Stuart Haigh, Martin Anson, Andy Jones; 2nd row (L-R): Jonathan Walton, Nick Bullen, Owen Kyffin, Martin Wyatt; Front row (L-R): Malcolm Higgs, Stephen Payne, Marie Morgan, Laura Adkins; not pictured: Laura Herbert



Sulgrave Manor

Home of George Washington's British
forefathers



Sulgrave Manor near Banbury OX17 2SD

Weekends and Bank Holidays from April-October and open every day in August except Fridays. Doors open 10am, last entry 4pm

**Special Children's activity days during half terms and holidays
(please see website for details)**

Beautiful, historic wedding venue

Step into the past, through the doorway built by George Washington's British ancestors, into the home they lived in and learn about the roots of Anglo-American relationships.

Explore the Manor House with its Tudor Great Hall and fully equipped Georgian kitchen.

Or simply come along to enjoy our family friendly gardens, picnic areas and afternoon teas.

Open everyday for pre-booked tour groups



01295760205 | www.sulgravemanor.org.uk

OXFORDSHIRE'S leading commercial property consultancy

Lambert Smith Hampton's Oxford office would like to introduce you to our dynamic team and remind you of the wide broad of property consultancy services we offer.

Representing a wide range of local and national landlords and occupiers, we are experienced and trusted and can provide you with industry leading advice at any stage of the property lifecycle. Our knowledge of the local and national property markets provides our clients with the tools to make informed, intelligent and accurate property decisions.

Agency

- For landlords: maximising asset value, letting, marketing strategy, enhancing rental values and filling voids
- For tenants: dealing with leasing issues such as subletting, assignments and disposal
- For businesses looking to relocate: everything from finding you the right space to negotiating terms and seeing the transaction through to completion
- For developers: agency advice throughout the development process, from pre-letting through to marketing of the finished property

Our agency teams have a proven track record of delivering results: securing the best locations and reducing businesses' property costs.



Kevin Wood MRICS
Director, Head of Office
Tel: 01865 200244
Email: kwood@lsh.co.uk



John Greaves MRICS
Director, Industrial and Logistics
Tel: 01865 200244
Email: jgreaves@lsh.co.uk



Charlotte Brisbane MRICS
Senior Surveyor, Agency
Tel: 01865 200244
Email: cbrisbane@lsh.co.uk

Property management

- Commercial property and asset management
- Environmental management
- Facilities management
- Health and safety risk mitigation
- Property accounting and service charge cost consultancy
- Telecoms, utilities procurement

Our commercial property management service provides a platform for out-performance for our clients. Through our close proximity to your properties and your occupiers, we are able to outperform the market in occupier retention and reduce the risk profile of your commercial property portfolio.



Colin Theobald FRICS
Director, Head of Thames Valley Property Management
Tel: 01865 200244
Email: ctheobald@lsh.co.uk



Simon Butler MRICS
Senior Surveyor, Property and Asset Management
Tel: 01865 200244
Email: subtler@lsh.co.uk

Valuation

- Charities Act valuation
- Company accounts valuation
- Compulsory purchase and compensation
- Diminution in value
- Distressed asset valuation
- Fund valuation
- Loan security
- Public sector valuation
- Valuation for taxation purposes

In today's fast-evolving property market, it is imperative to have a clear understanding of the true value of your assets. Our RICS registered valuers provide you with that understanding. That in turn enables you to make the right financial decisions, fulfil your regulatory obligations and understand and manage value risks effectively.

Building consultancy

- Building surveying and reporting
- Construction cost consultancy
- Construction project management
- Dilapidations
- Move management
- Real estate due diligence

Our building consultancy team is involved through the whole property lifecycle. We formulate initial construction appraisals, project manage the build process, maintain and refurbish the built asset, and redevelop obsolete property. We are involved at inception, during occupation and void periods, through to demolition and redevelopment, maximising value or managing your risk along the way.

Midland House, West Way, Botley, Oxford, Oxfordshire OX2 0PH

01865 200 244 www.lsh.co.uk

Lease advisory

- Lease renewals
- Lease restructuring
- Lease surrenders
- Rent reviews

Whether you're a landlord or a tenant, lease events (lease renewals, rent reviews or lease breaks) are an opportunity to improve the terms of a lease. It's important that you use the best possible advice to make the most of the available opportunities and mitigate against risk. Our in-depth local knowledge, coupled with our technical expertise, make us the right choice to deliver results for your business.



**David Gilbert FRICS
FCI Arb IRRV (Hons)**
Director, National Head
of Standards and Practice
Tel: 01865 200244
Email: dgilbert@lsh.co.uk



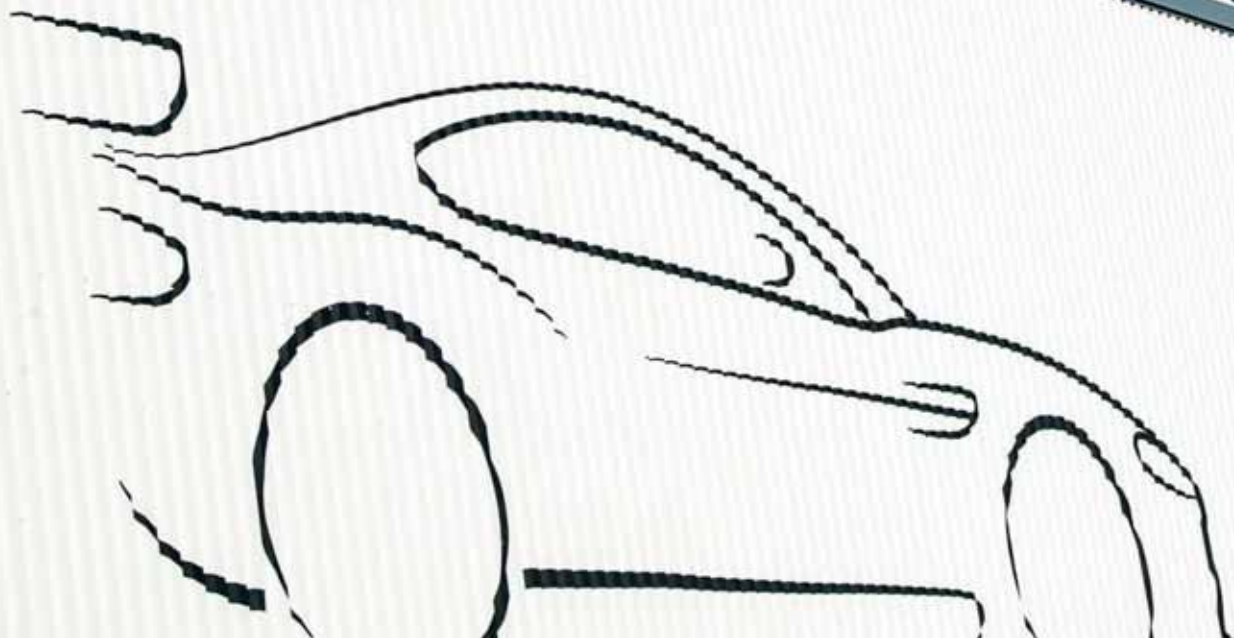
Robert Friend MRICS
Senior Surveyor,
Building Consultancy
Tel: 07525 632353
Email: rfriend@lsh.co.uk



We're proud of our commitment to sharing expertise and ideas across the business and the success that this brings for our clients. Please get in touch if you would like further information or would like to meet to discuss your property issues.



Prodrive





THE FACE OF BANBURY FOR THREE DECADES

Prodrive is proud to have been part of the Banbury community for 30 years.

During that time we have grown from a small rally team with a handful of staff, to one of the world's leading motorsport and advanced technology businesses.

At our new facility by the M40 you will find race and rally cars for Aston Martin, Volkswagen, MINI and Subaru being created alongside innovative technologies for the automotive, aerospace and marine sectors.

Today we are making commercial jet engines more efficient; electric and hybrid cars more economical; Britain's 2017 America's Cup entry more rapid; and even helping the European Space Agency explore Mars.

Prodrive
Chalker Way
Banbury
OX16 4XD

T 01295 273355
E enquiries@prodrive.com
W www.prodrive.com

prodrive

BEGBROKE SCIENCE PARK

WHERE SCIENCE AND INDUSTRY MEET



Research Innovation Impact Partnerships Space

Begbroke Science Park sits within the heart of Oxford's science and engineering activity – the only science park wholly owned and managed by Oxford University. If you're an emerging science-based business we know who you need to know. We'll connect you to Oxford's world-class interdisciplinary research, and to organisations across the Oxfordshire Knowledge Spine.

Additional Mixed-use Flexible Offices & Labs
RESERVE YOUR SPACE NOW! Call us on 01865 283700



E-mail: enquiries@begbroke.ox.ac.uk

www.begbroke.ox.ac.uk

[@BegbrokeScience](https://twitter.com/BegbrokeScience)

3036279

B/308287/07/17/FULL